

## 1/2" SHANK MICRO TAP GUIDE

### FEATURES

Reversible tension pin for male & female hole centering of tap

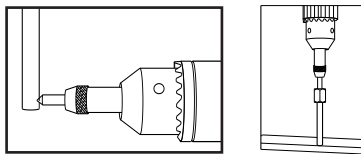
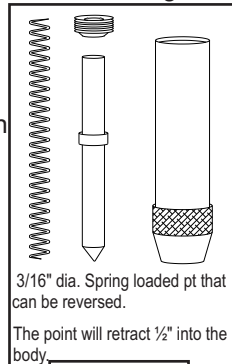
1/2" diameter hardened shank knurled for easy handling

3/4" diameter hardened spring tension pin

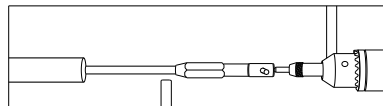
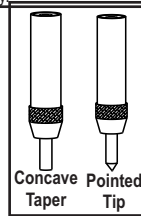
Shank Dia : 1/2"

Length : 3"

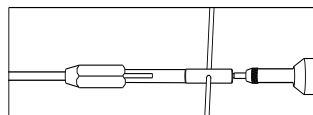
Tap Size Range : #10 -1



It can be chucked up in the lathe tail stock or the Drill press



The point is placed in the small hole at the end of the tap wrench & the tailstock advanced until the tap is against the hole & the point is fully retracted. You can also use this without a tap wrench if the tap has a center hole. Turn the tap with a regular wrench that fits the flats.



As you turn the tap wrench, the point springs forward, maintaining pressure against the wrench, keeping it in alignment with the hole you are tapping.

The concave end is good for smaller taps, which usually have a 60 deg. taper ground at the end. This allows great support and alignment. Use a tiny wrench to turn the tap.

